

Print and cut out these rabbit breed ID flashcards. Fold them over so the writing is on one side and the picture is on the other. Keep checking our website because we will add more cards. www.RabbitSmarties.com



Breed: **Jersey Woolly**

Showroom Classification: **Self**

4 class

Registration Variety: **Blue**

Photo credit: Kelsey Shultz

Royaldreamrabbity.webs.com



Breed: **American Chinchilla**

Showroom Classification: **Standard**

6 class

Registration Variety: **Standard**

Photo credit: Lauren Nicholas



Breed: **American Fuzzy Lop**

Showroom Classification:
Broken Pattern

4 class

Registration Variety: **Broken Black**

Photo credit: Lauren Nicholas



Breed: **Harlequin**

Showroom Classification: **Magpie**

4 class

Registration Variety: **Black Magpie**

Photo credit: *Lauren Nicholas*



Breed: **Silver**

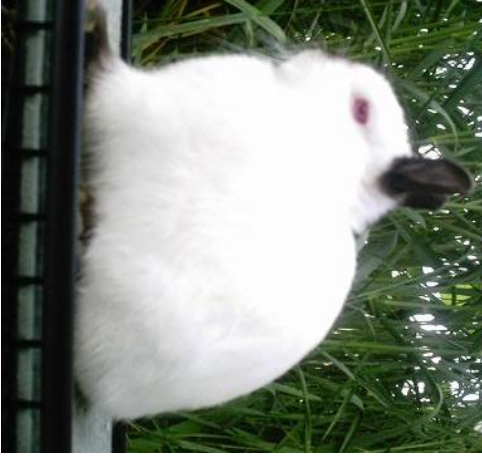
Showroom Classification: **Black**

4 class

Registration Variety: **Black**

Photo credit: *Karen Williams*

<http://pinewind.rabbitsonline.com>



Breed: **Netherland Dwarf**

Showroom Classification:
Himalayan.

Note: the answer AOV is not correct!

4 class

Registration Variety: **Blue**

Photo credit: *Farrah Stewart*

<http://fsrabbity.webs.com>